

2019
SUMMER
NEWSLETTER



www
gtc1
net



GTC CONGRATULATES NEW LEADERSHIP

GTC recently named **Todd Schroeder** as President and announced its Executive Committee Leadership Team. Todd has been with GTC since 2008 and was previously named Vice President in 2012. He has 24 years of construction experience and has been managing GTC's largest strategic business unit, Education, which generates nearly a third of the firm's annual revenue.



Brian Laartz



Todd Schroeder

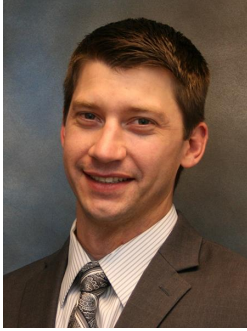


Joe Vasbinder

"The announcement of Todd Schroeder as President and the Executive Committee Leadership transition has been a six-year process in anticipation of my retirement at the end of 2019," said **Brian Laartz**, former GTC President. "I am confident that this team will move GTC forward for the next 35 years." Brian will remain on the Board of Directors until the end of the year.

In addition to Brian and Todd, the Executive Committee is comprised of **Jeff Nading**, Chief Executive Officer; **Jamison Martin**, Vice President of Preconstruction Services; and **Joe Vasbinder**, whom the firm announced as Executive Vice President. Joe has been with GTC for 25 years, since he began as an intern while attending CSU. He has been a Vice President since 2008. Joe manages the firm's Metro Denver office.

The firm also announced **Lance Swanson** as Vice President. Lance has been with the firm since 2010 and manages GTC's Public projects strategic business unit. Lance will also assume the role of EEO officer.



Jamison Martin



Jeff Nading



Lance Swanson



Nicole Wempe

And the final leadership shift comes with the announcement of **Nicole Wempe** as principal. Nicole has been with GTC since 2013 and has completed over \$225M of projects in her 22-year career, including working with some of GTC's largest clients.

GTC HELPS WOMEN IN CONSTRUCTION

Nicole Wempe, GTC Senior Project Manager, recently represented the firm at the Women In Construction (WIC) Summer Academy 2019, hosted by Aims Community College. She was one of four industry professionals who shared their time at the daylong event. WIC takes high school girls who are considering a career in construction, and introduces them to perspectives of active Project Managers, and real-life immersion in the job.





GTC's Learning and Development Manager **Amy Powell** and Project Engineer **Taylor Hutton** are also heavily involved in helping women in construction. Taylor is involved in an outreach program that goes into high schools and speaks to girls about having a career in the industry. Amy is a former Vice President of the National Association of Women In Construction (NAWIC), and currently volunteers with WIC programs at CSU.

On average, women comprise only [9 percent of the industry](#), across all fields in construction. GTC's own female-ratio is at 18 percent.

GTC FIELD DOMINATES iAUDITOR TRANSITION



Amy Powell is a former GTC Project Manager and is now our Learning and Development Manager. Did you know she also has her own YouTube channel? Check out [The Girl in the Hard Hat](#), Amy's site for industry professionals, where she teaches soft skills needed to survive and excel in construction.

We are proud to announce that iAuditor has been officially integrated into GTC's Field Teams. The program was assimilated easily and quickly by our site supervisors, and was well-received.

iAuditor simplifies our safety and quality processes by streamlining the documentation and paperwork. Instead of trying to get back to the construction trailer, printing out checklists, and then trying to recall all of the information from, say, a field inspection, this program is a convenient cell phone app that brings the checklists out to where the work is actually taking place for real-time inspections. This saves our field supervisors time.

Additionally, the program also provides instant access of inspections to the office managers. This, in turn, increases safety and quality engagement of the company as a whole, rather than leaving those key components to be site-based, only. Safety and Quality are each a company-wide effort, and this technology helps with the communication and documentation of these processes.

GRAND OPENINGS

ARVADA POLICE STATION DELTA

Location: Arvada

Architect: Barker Rinker Seacat



BCH OUTPATIENT PEDIATRIC REHABILITATION

Location: Erie
Architect: PEH



RECENTLY COMPLETED

STARBUCKS AT CONSTITUTION & MARKSHEFFEL

Location: Colorado Springs
Architect: G3



RESOLUTE BARREL ROOM AT CANDELAS POINT

Location: Arvada
Architect: Treanor HL



SHERWIN WILLIAMS GOLDEN

Location: Golden
Architect: Lingle Design Group



CANDELAS POINT RETAIL LOTS 3 & 4

Location: Arvada
Architect: Galloway & Company



PARK 4040

Location: Frederick
Architect: Sy-Bazz



**BCH FOOTHILLS PHARMACY
RENOVATION**

Location: Boulder
Architect: Boulder Associates



**UNDER CONSTRUCTION
GROUNDBREAKINGS**



SWALLOWS CHARTER ACADEMY

Location: Pueblo West
Started: May 2019
Architect: Hord Coplan Macht



LOVELAND FIRE STATION NO. 7

Location: Loveland
Started: April 2019
Architect: Belford Watkins Group

1STBANK AT CANDELAS



Location: Arvada
Started: June 2019
Architect: Mittelstaedt Cooper & Associates

IN PROGRESS



ADAMS COUNTY FIRE STATION NO. 11

Location: Denver
Started: June 2018
Architect: Allred & Associates



HOLLY HILLS CLUBHOUSE & POOL

Location: Thornton
Started: Nov 2018
Architect: VFLA



WESTMINSTER GREENHOUSE AND ADMIN BUILDINGS (ENGLAND PARK GREENHOUSE CENTER)

Location: Westminster
Started: Nov 2018
Architect: D2C



VISTA HIGHLANDS RETAIL CORE & SHELL LOTS 3 AND 5

Location: Broomfield
Started: Dec 2018
Architect: Naos Design Group

BCH CMC MEDICAL OFFICE BUILDING #2

Location: Lafayette
Started: Nov 2018
Architect: Boulder Associates



INDIANA PLAZA CORE & SHELL

Location: Arvada
Started: Jan 2019
Architect: Nama Partners



ASCENT CLASSICAL ACADEMY

Location: Golden
Started: May 2019
Architect: AndersonMasonDale



MORE IN PROGRESS

DPS SAMSONITE HIGH SCHOOL RENOVATION

Location: Denver
Started: Jan 2019
Architect: GKK Works



SVVSD MAIN STREET SCHOOL

Location: Longmont
Started: May 2019
Architect: Wold Architects and Engineers



LOVELAND CLASSICAL SCHOOLS LOCKER ROOMS

Location: Loveland
Started: June 2019
Architect: Hord Coplan Macht



ALSO UNDERWAY



REGIS STUDENT CENTER ADDITION/REMODEL

Location: Denver
Started: Jan 2018
Architect: Soderstrom



DPS KIPP SUNSHINE PEAK ACADEMY

Location: Denver
Started: Oct 2018
Architect: Cuningham Group



CITADEL ON COLFAX SUBDIVISION, PH 1

Location: Aurora
Started: Sept 2018
Architect: Galloway & Company

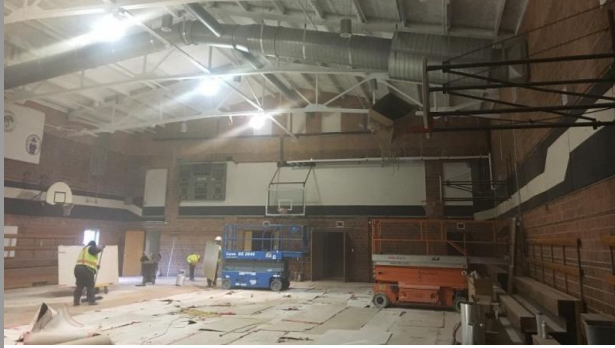


WELD RE-1 PLATTEVILLE ELEMENTARY SCHOOL ADDITION/RENOVATION

Location: Platteville
Started: Feb 2018
Architect: Treanor HL

WELD RE-1 SOUTH VALLEY MIDDLE SCHOOL RENOVATION

Location: Platteville
Started: June 2018
Architect: Treanor HL



HEARTLAND DENTAL TI

Location: Arvada
Started: June 2019
Architect: SEH Architects

COMING SOON

Allred MOB
Arvada Fire Station No. 7
Arvada Fire Station No. 9
Banner West Greeley
Centerra Industrial Bldg 5
Colorado Retina TI
Great Western Industrial Park
Greeley Fire Station No. 2
Greeley Fire Station No. 6
LCC at CTC Bldgs B&C
Les Schwab Arvada
Parker Pointe
Premier Eye Center
Regis University Air Dome
Toll Brothers Montane Family Amenity

EVENTS



**GTC is proud to be a sponsor of the
2019 Big Dig of Northern Colorado!**

*Saturday, July 13
9am - 1pm*

Ritchie Bros.
4444 Ritchie Dr., Longmont, CO

For tickets and other event information, [click here](#).

Dennis Richard | Vice President of Business Development | drichard@gtc1.net
Brandon Dooling | Director of Business Development | bdooling@gtc1.net
303-772-4051 | <http://www.gtc1.net>

