



# What's New



### *In this issue:*

- \* News Nuggets
- \* A look at projects we completed in the first part of the year
  - \* A look at projects we started
- \* Guided tours of Roaring Forks still available! (See below)



## News Nuggets

### GTC adds "character" to groundbreaking at Mapleton School



GTC is pleased to announce that it has broken ground on a 20,000 sf addition and 35,000 sf renovation to Welby Community School (PK-6) for the Mapleton Public School District. The district went all-out for the ceremony, which included a group of students performing on marimbas, a Color Guard bringing in the flags, and a reading from *Mighty, Mighty Construction Site*, by Sherri Duskey Rinker, for which GTC transformed a construction vehicle to resemble a character in the book.

### GC of the Year



GTC has been named 2017 General Contractor of the Year, in the \$50-100M category, by the American Subcontractors Association of Colorado. This marks the sixth time GTC has won this award in the \$50-100M category since 2005; three of those wins have been in the past five years. "It is

always a special honor to receive this particular award because good subcontractor relations directly correlate to our success," GTC President Brian Laartz said. "We are pleased that Colorado subcontractors can tell how much we value them as part of our team."



Photo: Brian Laartz, center, accepts the award from members of the ASAC.

---

## Jeff Nading inducted into Boulder County Business Hall of Fame



**Jeff Nading**, GTC's CEO, was inducted into the 2017 Boulder County Business Hall of Fame at a recent luncheon. *"The Boulder County Business Hall of Fame is a private, nonprofit 501C3 dedicated to the encouragement of business excellence in Boulder County by recognizing... those individuals who have been instrumental, through business-related efforts, in providing direction, energy and support to the shaping of Boulder County since its inception."* ([Source](#))

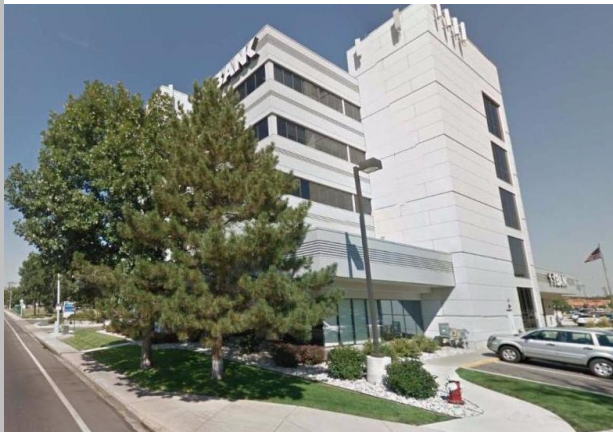
Nading purchased GTC from its then-owners in 1993. Under his leadership the firm grew from four employees to over 100, and increased annual volume from \$2.5M to over \$120M per year. Between 1993 and 2016 the company completed over \$1.5B in construction projects. GTC has been headquartered in Longmont since 1977. The firm opened a second office in Colorado Springs in 2005. In

2016 that office moved to Meridian Business Park to better serve our Metro-Denver clientele.

In addition to a firm commitment to building projects that enhance the community, Nading also established a companywide GTC Green initiative. Not only does the company recycle and drive a fleet of electric and hybrid vehicles, but the firm also boasts fifteen LEED-accredited staff members, plus the first person in the State of Colorado to become WELL-accredited. In summer 2015 Nading also began the GTC Community Foundation, which makes charitable donations to the Longmont Community Foundation and recognizes GTC employees for their volunteer work. To-date, GTC has donated \$7,122 to LCF on behalf of employee volunteer hours.

---

## Projects We Finished



**1st Bank Longmont Branch - 1st Floor Remodel**  
Location: Longmont  
Architect: Kieding Office Architects



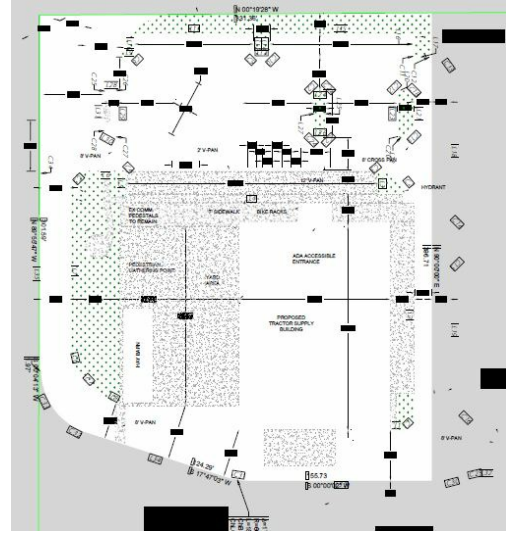
**Rigden Farm Retail Building D**  
Location: Fort Collins  
Architect: Castillo Architects



**Adams County Fire Station 14 Administration Remodel**

Location: Denver

Architect: Allred & Associates



**Drake Loveland Commons - Phases 1 & 2 Site Work**

Location: Loveland

Architect: nama partners, llc



**Ben Franklin Academy Gym & Classroom Addition**

Location: Highlands Ranch

Architect: Intergroup Architects



**CTC Prairie Building**

Location: Louisville

Architect: PEH Architects



**Colorado Tech Center - Accurrence Core and Shell and TI**

Location: Louisville

Architect: Ware Malcomb



**Gateway Village Phase 2**

Location: Golden

Architect: (Jeff Dingwall)



**Regis University - Clarke Hall Incubator Lab**  
Location: Denver  
Architect: Soderstrom Architects



**Avalanche Harley Davidson Core and Shell and TI - Gateway Village**  
Location: Golden  
Architect: G3 Architecture



**Broomfield Bay Aquatic Park - building additions/remodels**  
Location: Broomfield  
Architect: BHA Design Incorporated

**Additional Projects Completed:**

**BCH CMC ED Remodel**  
Location: Lafayette  
Architect: Boulder Associates



**DIY TIPS**  
from our own Field Experts

**If you don't know what you're doing, remember: YouTube is your friend.**

- Jay Scheiner  
Assistant Super

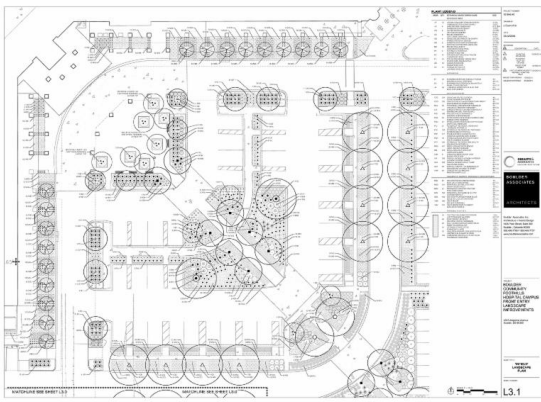
**Projects In-Progress**



**DU - Alpha Phi House**  
Location: Denver  
Started: September 2016  
Architect: Cunningham & Associates



**633 CTC Core, Shell, and Site Improvements (633 CTC Flex Warehouse)**  
Location: Louisville  
Started: June 2016  
Architect: MOA Architecture



**BCH - Foothills Landscaping Phase 2**

Location: Boulder  
Started: April 2017  
Architect: Ouellette & Associates



**Stoney River Assisted Living & Memory Care**

Location: Glenwood Springs  
Started: April 2016  
Architect: Mudrovich Architects

*Please call Dennis if you'd like a personalized tour of this site. And remember to bring your rod and reel: the site backs to the Roaring Forks River - home to gold medal fishing!*



**Aims Community College - Greeley Campus**

Location: Greeley  
Started: May 2016  
Architect: DLR Group



**Greeley New Fire Station No. 1**

Location: Greeley  
Started: September 2016  
Architect: Aller Lingle Massey Architects P.C.



**Loveland Classical Schools**

Location: Loveland  
Started: October 2016  
Architect: Hord Coplan Macht



**Regis University - Main Hall Phase 2**

Location: Denver  
Started: May 2017  
Architect: Bennett Wagner & Grody



**South Adams Fire Station #2 Renovation**

Location: Commerce City  
Started: January 2017  
Architect: Allred & Associates

---



**North Star Academy Addition**

Location: Parker  
Started: February 2017  
Architect: Hord Coplan Macht

---



**Woodrow Wilson Academy Addition**

Location: Westminster  
Started: January 2017  
Architect: Hollis and Miller Architects

---



**McGlone Academy Addition**

Location: Denver  
Started: January 2017  
Architect: DLH Architecture

---



**Tractor Supply Company**

Location: Loveland  
Started: March 2017  
Architect: nama partners

---



**Jeffcom 911 Remodel**

Location: Lakewood  
Started: May 2017  
Architect: Wold Architects and Engineers

---



**Aurora Fire Station 15**

Location: Aurora  
Started: March 2017  
Architect: HB&A

---



**Centerra Industrial Building #2**

Location: Loveland  
Started: April 2017  
Architect: Ware Malcolm

---



**CTC - RUPES USA**

Location: Louisville  
Started: March 2017  
Architect: Intergroup Architects

---



**MPS - Welby Community School Renovation**

Location: Denver  
Started: May 2017  
Architect: Humphries Poli

---



**CTC - Innovative Openings**

Location: Louisville  
Started: May 2017  
Architect: Rosenthal Associates

---



**CarMax - Golden**

Location: Golden  
Started: July 2017  
Architect: Pieper O'Brien Herr Architects

---



**JEFFCO Floors 2017**

Locations: Arvada, Denver, Lakewood, Indian Hills

Started: May 2017

Architect: Anderson Hallas Architects

# DIY TIPS

from our own Field Experts

**Unplug the saw  
when you change  
the blade.**

- *Kevin Loson*  
*Assistant Super*

## Coming Up

Milestone Academy - new school, Castle Rock  
Commerce City Rec Center Renovations  
1stBank, Colorado Springs  
Regis University - Financial Affairs Renovations  
Regis University - New Sports Fields  
Regis Student Center

Request a tour of our Glenwood Springs site, and spend the afternoon on Roaring Forks -  
click here!

*Your construction partner*

700 Weaver Park Road | Longmont, CO 80501  
9777 Pyramid Court, Suite 105 | Englewood, CO 80112  
[www.gtc1.net](http://www.gtc1.net)

Dennis Richard | Golden Triangle Construction | 303-772-4051 | [drichard@gtc1.net](mailto:drichard@gtc1.net)  
| <http://www.gtc1.net>